

公司简介

北京沃尔德超硬工具有限公司，2006年8月成立于北京市电子城科技园区，是一家国家级高新技术企业。沃尔德拥有一个分公司、两个全资子公司，拥有七十项专利和多项国际先进技术。沃尔德主体公司以钻石刀轮为代表的玻璃切割工具、PCD/PCBN刀具、超硬锯片等业务为主。沃尔德全资子公司—廊坊西波尔钻石技术有限公司，以CVD金刚石材料及制品、金刚石拉丝模芯、进口PDC复合片、PCD/PCBN刀具复合片、超硬材料来料加工业务为主。

沃尔德工厂坐落于河北廊坊大厂潮白河工业园区，占地面积90亩，现有14000余平米的办公楼及厂房已投入使用，另有40000平方米现代化厂房及科研楼正在设计建设中。沃尔德是全球屈指可数的，能批量化生产高渗透及微齿钻石刀轮的厂家之一；是中国颇具规模和影响力的PCD/PCBN刀具、PCD/合金锯片、PCD拉丝模芯、CVD金刚石制品的专业生产制造商；是国内最大的复合超硬材料高精度激光加工基地、亚洲最大面积的CVD金刚石厚膜生产厂家、国际上最具规模的复合超硬材料加工服务商。

2011年8月，沃尔德组建锯片研发、生产和销售团队，购置数十台包括德国孚尔莫（VOLLMER）在内的先进专业制锯设备。沃尔德作为超硬锯片生产的后起之秀，以高起点、高品质赢得了海内外客户的高度评价和认可，沃尔德超硬锯片广泛应用于电子、建材、木材、有色金属、建筑装饰、复合材料等加工领域。

沃尔德已通过ISO9001：2008质量体系、ISO14000环境管理体系认证。

沃尔德以“角逐行业巅峰，缔造世界名牌”的精神，秉承“诚信、创新、客户至上”的经营理念，不断致力于技术创新和应用领域的广泛拓展。

沃尔德是一个富有激情和梦想、拥有国际视野的团队，愿与各界朋友携手合作，共同致力于超硬材料、超硬工具行业的发展！



质量与环境认证证书



国家级高新技术企业



中国首届创新创业大赛获奖证书



钻石刀轮/刀轴，PCD/PCBN 刀具，金刚石拉丝模芯，PCD/PCBN刀粒等产品RoHS证书



BV—必维国际检验集团



拥有70余项发明及实用新型专利

About Us

As a national hi-tech enterprise, Beijing World Super Hard Tools Co., Ltd. (namely "Worldia") located in Zhongguancun Science and Technology Park in China, Worldia is growing with one branch company, two wholly-owned subsidiaries, above seventy patents and multiterm international advanced technologies, and it is a professional manufacturer of the glass cutting tools, PCD/PCBN cutting tools, diamond die blanks, saw blades and CVD diamond lines of product. Langfang Supower Diamond Technology Co., Ltd ("Supower" for short) , one of two wholly-owned subsidiaries, mainly businesses in CVD diamond film, die blanks, PDC cutters, PCD&PCBN blanks and material processing service.

Worldia factory is located in Dachang Chaobaihe Industrial Park of Hebei province, with 90 mu of land and more than 14,000 m2 modern workshops & modern office building. And there are still 40,000 m2 modern workshops & research office to be built.

In the field of the glass cutting tool, Worldia is one of the top three manufacturers of diamond scribing wheel in the world, and famous for production of PCD/PCBN cutting tools, PCD & carbide saw blades, PCD diamond die blanks, and CVD diamond film in China. Worldia is the largest domestic base in high precision laser processing for super hard material, and is the largest factory in production area of CVD diamond film in Asia.

In August 2011, Worldia rebuilt the parties of design, production and marketing. And completely equipped with advanced manufacturing machineries, such as VOLLMER, professional machinery for production saw blades. We gained high reputation and recognition in production of saw blades with our high quality and high requirements. Our saw blades are used widely in the processing fields of electronics, construction, wood, non-ferrous metals, architectural ornaments and composite materials.

Worldia had earned the certification of ISO9001 : 2008、 ISO14000 for our several years of efforts.

With the aim of "Compete for the top, Create global brand" , Worldia insists on "trust, innovation, customer first" on the business, and constantly devoted in technology innovation and application fields.

Full of passion and with broad vision, the staff at Worldia would like to establish business relationships with friends all over the world to promote the advancement of the super hard material industry.

目录 >>

CONTENTS

公司简介	01
About Us	
产品介绍	04
Product Catalog	
PCD锯片	04
PCD Saw Blades	
板式家具PCD锯片	05
PCD Saw Blades for Board Furniture	
线路板专用PCD锯片	06
PCD Saw Blades for Circuit Boards	
强化木地板PCD锯片	07
PCD Saw Blades for Laminate Wood Flooring	
电动工具PCD锯片	07
PCD Saw Blades for Electric Tools	
硬质合金锯片	08
TCT Saw Blades	
有色金属合金锯片	09
TCT Saw Blades for Non-ferrous Metals	
亚克力合金锯片	09
TCT Saw Blades for Acrylic	
多功能合金锯片	10
Universal Type TCT Saw Blades	
蜂窝铝合金锯片	10
TCT Saw Blades for Cellular Aluminum	
锯片使用说明及注意事项	11
Instructions & Guidelines in Using Worldia Saw Blades	
沃尔德其他系列产品一览	13
A Glimpse of Other Series Products from Worldia	
特殊锯片定制表	14
Customer Specified Saw Blades Order Form	

PCD锯片 | PCD Saw Blades

自上世纪70年代以来，PCD（聚晶金刚石）材料在机械加工和耐磨部件领域获得广泛应用。与传统硬质合金和工具钢相比，PCD圆锯片具有更高的硬度和耐用度，使用寿命提高30至120倍，从而显著降低用时和成本。

沃尔德凭借十余年超硬材料及工具生产的丰富经验，辅以优化的刃口设计、国际一流原材料和全自动化精工制造，打造卓越品质的PCD锯片产品：

- 刃口锋利、切割精准
- 切口平整光滑
- 超长寿命
- 实现更高材料利用率

沃尔德可提供直径从100毫米至450毫米多种规格PCD锯片产品，用于加工板式家具、强化木地板、线路板、亚克力、有色金属等多种材料。

我们还可根据需要进行定制设计生产，以满足客户的不同需求。



Since its development in the 1970s, PCD has found widespread applications in numerous machining and wear part applications. Compared with tungsten carbide and steel circular saw blades, PCD saw blades are harder and significantly more durable, performing 30 to 120 times longer tool life, and this saves both time and money.

Through using the state-of-art technologies, optimized edge design, top grade diamond materials and fully automatic equipment, Worldia manufactures PCD saw blades with the following characteristics:

- Sharp edges with precise configuration
- Smooth cut edge and unrivaled surface finish
- Ultra-long tool life
- Greater yield rate

Worldia has been offering PCD saw blades with diameters from 100 mm to 450 mm, the principal applications include the machining of board furniture, woods, circuit board, plastics, on-ferrous metals, etc.

Apart from our comprehensive line of standard saw blades, customer specified products are also available upon request.



WORLDIA

板式家具专用PCD锯片 | PCD Saw Blades for Board Furniture

应用 Applications:

- 应用于电子开料锯及精密裁板锯等设备，对单双贴面刨花板、胶合板、中密度板进行加工。
- This product is typically developed to cut faced chipboard, plywood and MDF, usually working on panel sizing saws.

特点:

- 优化的刃口设计，全自动化精工制造
- 元素六公司原装进口PCD锯齿，与优质碳素工具钢完美结合
- 刃口锋利、切割精准、寿命超长
- 卓越切割品质，表面不爆口，切口平整
- 配合双划线PCD底锯效果更佳

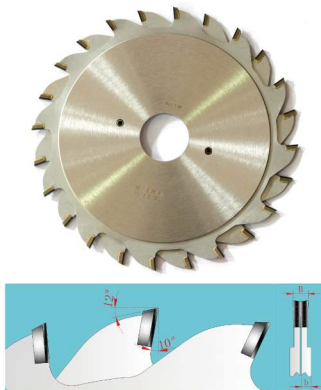
Advantages:

- Optimized edge design, fully automatic production line
- Top grade PCD tool tips from Element Six with premium quality tool steel
- Excellent sharpness and precision, ultra-long tool life
- Chip-free and smooth cuts
- Greater performances with split scoring saw blades



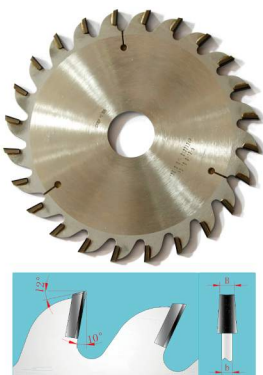
主锯 Panel Sizing Saw Blades

序号 Item	外径 (D) Diameter	刃厚 (B) Kerf	内孔 (d) Bore	齿数 (P) Number of Teeth
1	300	3.2	30	72
2	300	3.4	30	84
3	300	3.2	60	96
4	350	3.5	30	72
5	350	3.5	30	84
6	355	4.4	65	72
7	355	3.2	30	84
8	400	4.4	60	96
9	450	3.6	40	72



双划线锯 Split Scoring Saw Blades

序号 Item	外径 (D) Diameter	刃厚 (B) Kerf	内孔 (d) Bore	齿数 (P) Number of Teeth
1	100	2.8~3.8	20	12+12
2	100	2.8~3.8	22	12+12
3	100	3.0~4.0	20	12+12
4	100	3.0~4.0	22	12+12
5	120	2.8~3.8	20	12+12
6	120	2.8~3.8	22	12+12
7	120	3.0~4.0	20	12+12
8	120	3.0~4.0	22	12+12



单划线锯 Conical Scoring Saw Blades

序号 Item	外径 (D) Diameter	刃厚 (B) Kerf	内孔 (d) Bore	齿数 (P) Number of Teeth
1	120	2.8~3.8	20	24
2	120	2.8~3.8	22	24
3	120	3.0~4.0	20	24
4	120	3.0~4.0	22	24
5	180	3.3~4.3	45	36
6	180	4.3~5.3	45	36
7	200	4.2~5.2	20	36
8	200	4.4~5.6	65	36

线路板专用PCD锯片 | PCD Saw Blades for Circuit Boards

应用 Applications:

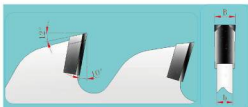
- 线路板材料精密加工.
- This Product is specially designed for circuit boards.

特点:

- 优化的刃口设计, 全自动化精工制造
- 元素六公司原装进口PCD锯齿, 与优质碳素工具钢完美结合
- 刃口锋利、切割精准、寿命超长
- 卓越切割品质, 表面不爆口, 切口平整

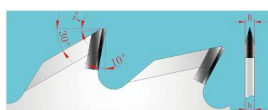
Advantages:

- Optimized edge design, fully automatic production line
- Top grade PCD tool tips from Element Six with premium quality tool steel
- Excellent sharpness and precision, ultra-long tool life
- Chip-free and smooth cuts



裁板锯片 Panel Sizing Saw Blades

序号 Item	外径 (D) Diameter	刃厚 (B) Kerf	内孔 (d) Bore	齿数 (P) Number of Teeth
1	305	2.4	25.4	60
2	305	3.0	25.4	60
3	305	3.0	31.75	60
4	325	4.0	30	54
5	325	4.0	60	54
6	350	3.4	30	72
7	350	3.4	30	84
8	375	4.0	30	72
9	405	3.4	30	72
10	405	3.4	30	80



PCD V-Cut刀 PCD V-Cut Blades

序号 Item	外径 (D) Diameter	刃厚 (B) Kerf	内孔 (d) Bore	齿数 (P) Number of Teeth
1	120	2.2	25.4	20
2	120	2.2	25.4	30
3	130	2.5	25.4	25



WORLDIA

PCD强化木地板锯片 | PCD Saw Blades for Laminate Wood Flooring

应用 Applications:

- 主要应用于强化木地板、密度板、中密度板、竹木以及实木等材料。
- This Product is well suited for cutting laminate wood flooring, medium and high density board, bamboo, solid wood, etc.

特点:

- 优化的刃口设计, 全自动化精工制造
- 元素六公司原装进口PCD锯齿, 与优质碳素工具钢完美结合
- 刃口锋利、切割精准、寿命超长
- 卓越切割品质, 表面不爆口, 切口平整

Advantages

- Optimized edge design, fully automatic production line
- Top grade PCD tool tips from Element Six with premium quality tool steel
- Excellent sharpness and precision, ultra-long tool life
- Chip-free and smooth cuts



序号 Item	外径 (D) Diameter	刃厚 (B) Kerf	内孔 (d) Bore	齿数 (P) Number of Teeth
1	200	2.2	25.4	60
2	200	2.2	25.4	48
3	200	1.45	80	48
4	210	1.8	40	48
5	250	2.6	30	60
6	250	1.45	80	48
7	300	3.2	30	60
8	300	2.2	30	60

电动工具PCD锯片 | PCD Saw Blades for Electric Tools

应用 Applications:

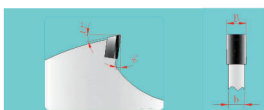
- 主要应用于纤维石膏板、实木、密度板、粘合板等各种板材。
- This product has advantageous performances in cutting fibrous plaster, solid wood, high density board and plywood.

特点:

- 优化的刃口设计, 全自动化精工制造
- 元素六公司原装进口PCD锯齿, 与优质碳素工具钢完美结合
- 刃口锋利、切割精准、寿命超长

Advantages

- Optimized edge design, fully automatic production line
- Top grade PCD tool tips from Element Six with premium quality tool steel
- Excellent sharpness and precision, ultra-long tool life



序号 Item	外径 (D) Diameter	刃厚 (B) Kerf	内孔 (d) Bore	齿数 (P) Number of Teeth
1	100	2	20	5
2	100	2	20	6
3	110	2	20	5
4	110	2	20	8
5	190	2.2	25.4	6
6	190	2.2	25.4	8
7	190	2.2	25.4	12
8	190	2.2	25.4	16

硬质合金锯片 | TCT Saw Blades

北京沃尔德超硬工具有限公司多年来贯穿从事超硬材料研发、加工及超硬制品的研发与生产。我们采用高档硬质合金刀头及钢材制造出有色金属、无机非金属、木材及家具行业使用的高档硬质合金锯片。北京沃尔德超硬工具有限公司拥有德国进口的全套硬质合金锯片加工设备、以及精密检测仪器，产品在国内及全球市场享有盛誉。

产品优势

- 长寿命锯齿
- 降低高速旋转中的振动和噪音

主要应用

- 铝型材、断桥铝、铝棒、铜棒等有色金属材料
- 加工亚克力及PVC板材
- 密度板、相框等材料
- 蜂窝铝合金



Based on its a dozen years' technical accumulation and proprietary technologies, Worldia offers a comprehensive range of carbide saw blades for aluminum alloys, wood and furnace industries. Worldia has advanced manufacturing equipment and inspection facilities, achieving great reputation from both home and abroad.

Typical Advantages

- Longer lasting tips
- Free from Vibration in running, minimal noise

Applications

- Non-ferrous metals
- Acrylic and PVC plates
- Medium density fiberboard, photo frame
- Cellular Aluminum



WORLDIA

有色金属合金锯片 | TCT Saw Blades for Non-ferrous Metals

应用 Applications:

- 应用于加工铝型材、断桥铝、铝棒、铜棒等有色金属材料，适用于门窗幕墙行业、铝型材行业等。
- This product is targeted at windows, curtain walls and aluminum section industry. It is recommended to cut various non-ferrous metals like aluminum sections, aluminum rods, copper rods, and so on.

特点:

- 森拉天时锯齿与优质碳素工具钢完美结合
- 独特的加工工艺与自动化设备精工细作而成
- 刃口锋利、切割精准、使用稳定寿命长

Advantages:

- An ideal combination of Ceratizit carbide teeth and top quality tool steel body
- Produced with un-rivaled technologies and fully automatic machinery
- Excellent sharpness and precision, ultra-long tool life



序号 Item	外径 (D) Diameter	刃厚 (B) Kerf	内孔 (d) Bore	齿数 (P) Number of Teeth
1	355	3.4	30	120
2	405	3.2	30	120
3	420	4.0	30	120
4	455	4.0	30	108
5	500	4.4	30	120
6	550	4.4	30	120
7	610	4.8	40	120

亚克力合金锯片 | TCT Saw Blades for Acrylic

应用 Applications:

- 适合加工亚克力及PVC板材等。
- This product is a good choice for cutting acrylic and PVC plates.

特点:

- 森拉天时锯齿与优质碳素工具钢完美结合
- 独特的加工工艺与自动化设备精工细作而成
- 刃口锋利、切割精准、使用稳定寿命长

Advantages:

- An ideal combination of Ceratizit carbide teeth and top quality tool steel body
- Produced with un-rivaled technologies and fully automatic machinery
- Excellent sharpness and precision, ultra-long tool life



序号 Item	外径 (D) Diameter	刃厚 (B) Kerf	内孔 (d) Bore	齿数 (P) Number of Teeth
1	203	2.0	30	100
2	255	2.6	30	100
3	255	2.0	30	120
4	305	2.6	30	120

多功能合金锯片 | Universal Type TCT Saw Blades

应用 Applications:

- 推荐用于亚克力薄版、铝合金型材、密度板、相框等材料。
- Typical applications include acrylic thin plates, aluminum sections, laminate wood floor, high density board and photo frames.

特点:

- 森拉天时锯齿与优质碳素工具钢完美结合
- 独特的加工工艺与自动化设备精工细作而成
- 刃口锋利、切割精准、使用稳定寿命长

Advantages:

- An ideal combination of Ceratizit carbide teeth and top quality tool steel body
- Produced with un-rivaled technologies and fully automatic machinery
- Excellent sharpness and precision, ultra-long tool life



序号 Item	外径 (D) Diameter	刃厚 (B) Kerf	内孔 (d) Bore	齿数 (P) Number of Teeth
1	203	1.7	25	80
2	255	1.8	25	100
3	255	2.6	25.4	100
4	305	2.6	30	120

蜂窝铝合金锯片 | TCT Saw Blades for Cellular Aluminum

应用 Applications:

- 专为蜂窝铝材料开发设计的一款锯片。
- This product is specially designed for cutting cellular aluminum.

特点:

- 森拉天时锯齿与优质碳素工具钢完美结合
- 独特的加工工艺与自动化设备精工细作而成
- 刃口锋利、切割精准、使用稳定寿命长

Advantages:

- An ideal combination of Ceratizit carbide teeth and top quality tool steel body
- Produced with un-rivaled technologies and fully automatic machinery
- Excellent sharpness and precision, ultra-long tool life



序号 Item	外径 (D) Diameter	刃厚 (B) Kerf	内孔 (d) Bore	齿数 (P) Number of Teeth
1	405	3.4	25.4	72
2	405	3.4	30	72
3	405	3.4	25.4	80
4	405	3.4	30	80



WORLDIA

沃尔德锯片使用说明及安全注意事项

Instructions & Guidelines in Using Worldia Saw Blades

本产品符合EN847-1的标准，使用本产品前请一定阅读此说明

(The product certificated by the EN847-1 standard, please read the introduction before using)



【机械】

机械必须在锯片安全盖、材料反弹预防装置等安全装置齐全的状态下进行操作。

【For Machinery】

- 1.The machinery must be running under the complete safety device with the safety cover of saw blades and against device of material rebound.



【人员】

使用本产品的人员应经过操作培训并有一定经验的人员使用。

【For Operator】

- 1.The operator must be full time trained and experienced.



【服装、护具】

1. 操作人员和有关人员必须配戴保护眼镜。
2. 操作时必须穿戴合适的工作服。不得穿戴领带、袖口张开的衣服、线手套等。长头发请用帽子或头巾等包住。

【The protective clothing and protector】

1. The operator and non-operator must wear the protective spectacles.
2. The operator must wear the suitable uniform. Tie, clothing with open-cuff and cotton gloves will be forbidden.



【使用前检查】

1. 安装锯片时首先要检查锯片的外观，发现本体有裂缝时，不允许使用(修理)。
2. 用过的锯片再使用前，必须检查刀头先端有无崩刃、脱落、本体(基板)有无裂纹、变形及有无异常磨损等导致的伤痕。若发现有以上异常情况，绝对不要继续使用。
3. 实际使用转速不应超过规定的最高转速。
4. 安装锯片用法兰盘的直径应大于锯片直径的1/3 mm。
5. 切割机的转速超过规定值或法兰盘直径小于规定值可能导致锯路弯曲及伤亡事故。

【Pre-check】

1. Please check the aspect of saw blades before using and do not use (repair) when the saw blades cracked.
2. The top saw tooth must be checked whether or not tipping, drop, crack, transform and scar of abnormal wear when Re-using the saw blades. Please stop using if the abnormal condition appeared.
3. Please saw blades working condition must be following the regulation rotate speed.
4. For set up the flange plate of saw blades, the diameter of flange plate should more than 1/3 of saw blades diameter.
5. The cutting machine over rotate speed working or the diameter of flange plate less than 1/3 of saw blades diameter might cause the bend of swage set and accident.



【使用中】

1. 锯片旋转时看上去没有转，所以使用中一定不要触摸锯片。
2. 绝对不可靠近锯片旋转面。在旋转锯附近作业时，必须穿戴好保护用眼镜、帽子、口罩、工作服及工作鞋，而不得进行强行切割作业。
3. 使用中发生异常声音、异常振动时，须立即停止作业进行检查。

【In Use】

1. DO NOT touch when saw blades is running.
2. Stay away from the rotated saw blades. Must be wearing the protective glasses, hat, mask, uniform and shoes when near by the saw blades. Do not cut forcibly.
3. Stop and Check when the unusual voice and vibrate will be appeared in operation.

**【安装、拆卸】**

1. 锯片的安装请遵守切割机械说明书的规定。
2. 锯片安装或拆卸时请带手套工作，避免伤害风险。
3. 锯片安装或拆卸时须套上保护锯齿用套管进行，以防止受伤和保护锯齿。锯片安装完毕后，请不要忘记拆下套管。
4. 确认机械主轴须与锯片中心孔径一致，对锯片不允许使用松的过渡环或套。
5. 确认机械的法兰盘未发生磨耗与变形，并确认表面没有异物附着，保障锯片与机械不发生松动和摆动。发现法兰盘有磨耗与变形时，请重新加工或更换新的法兰盘。法兰盘有异物附着时，请将法兰盘拆下后用金属清洗。
6. 锯片安装、拆卸时请使用随机械的专用扳手拧紧（拧松）螺母。不允许使用加长扳手或锤击工具拧紧（拧松）螺母。
7. 锯片安装完毕，首先轻轻转动锯片检查锯片的端跳在规定范围以内，确认合格后再接通电源，开始工作。
8. 锯片安装后开始操作时，切割进给速度要渐渐提高，待确认切削声音，加工尺寸精度无误后再设定合适的进给速度，从而进入正式作业。
9. 拆卸锯片时应首先在锯齿部套上塑料套管再拆卸锯片，以免划伤操作者和撞损锯齿。

【Setup, Dismount】

1. The setup of saw blades should following the introduction of incision machinery using please.
2. For safety, please set up or dismount the saw blades with the glove.
3. Please set up or dismount the saw blades with the saw tooth protector while take the protector off after setup.
4. Make sure the main machinery axle exact fit to the core aperture of saw blades; does not use when the bridge ring or cover of saw blades loosely.
5. Make sure the flange plate and saw blades have a good working condition with machinery. Please rework or renew one when flange plate has abraded or twisted. Please dismount and brushed by professional metal cleaning liquid when the flange plate sticking dust.
6. Please use the exclusive spanner to tighten up (screw off) the nut when set up and dismount the saw blades. It is forbid to use the non-suit spanners.
7. Please check the saw blades working in the prescribed limit of measure of deflection and then start to work after the saw blades set up.
8. The beginning of operation, machinery rotate speed should slowly increase, until the process size catches the requirement, thus starring the normal work.
9. To avoid injury of the operator and damage the saw tooth, please put on the plastic cover of saw tooth when dismount the saw blades.

**【再研磨、修理加工】**

1. 刀头的再研磨，本体及中心孔的修理，请委托本公司指定的服务部进行。
2. 清除附着在刀头部、本体上的污物，必须严格遵守清洗液厂家指定的清洗液浓度及使用方法的规定。若使用强酸液或特殊清洗液的方法进行清洗，可能诱发本体裂口、刀头焊接部及水口镶嵌物脱落产生危险。
3. 锯片需要补换刀头时，应与锯片生产厂家联系修理，以免破坏锯片的技术参数，使基体产生危险应力。
4. 锯片再研磨时一定要按包装盒上所标识的角度研磨，避免由于角度磨错影响切割质量。
5. 锯片再研磨后要达到工具的动平衡要求。

【Regrind and Repair】

1. Please authorize the manufacturer to offer the service when the regrind and repair needed.
2. Please follow the regulation of cleaning liquid requirement to brush the dirt of saw tooth and body. It is possible to cause dangers with the saw body crack, saw tooth weld and inlay of water gap drop if using the intense acid liquor or special cleaning liquid to brush.
3. To avoid the risk of damage the technical parameters, please contact the manufacturer when the saw tooth need to replace.
4. Please follow the angle which is labeled on the packing bag to regrinding, otherwise the quality of cutting could be affected.
5. Regrinding must base on the dynamic balance.

**【锯片存放】**

1. 锯片应装入包装盒内，垂直码放在专用货架上存放。

【Shelved】

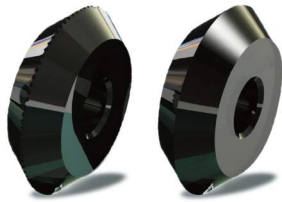
1. Saw blades with packing box must be standing on shelves vertically.



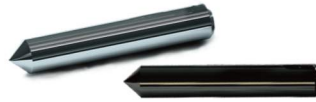
沃尔德其他系列产品

A Glimpse of Other Series Products from Worldia

玻璃切割工具 Glass Cutting Tools



钻石刀轮
Diamond Scribing Wheels

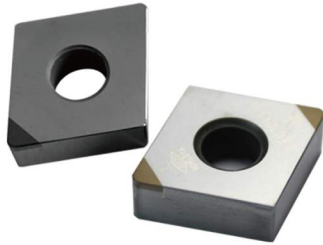


钻石/合金刀轴
Diamond & Carbide Axles



精密刀架
Holders

金属切削刀具 Metalworking Tools



PCD/PCBN数控刀片
PCD & PCBN Inserts



PCD铰刀/铣刀
PCD Reamers & Mills



亚克力铣刀
PCD Mills for Acrylic

木工刀具 Woodworking Tools



倒角刀
Chamfer Mills



子口荀刀
Dovetail Bits

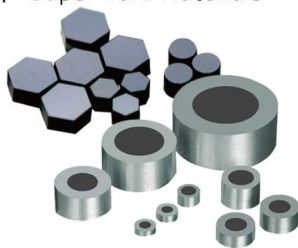


双圆弧底刀
Bowl & Tray Bits

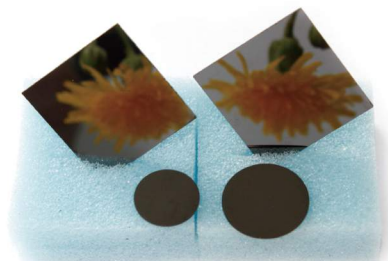


V型刀
V Type Slotting Cutters

超硬材料 Super-hard Materials



CXD拉丝模芯
Diamond Die Blanks



刀具用CVD 金刚石抛光片
CVD Diamond Tooling Blank
(Single Polished)



PCD/PCBN刀粒
PCD & PCBN Cutting Tool Tips